



Residential Stock Plans

Single Family Home with Basement Suite

High Performance Design + Build

Our Certified Residential Designer at DOS Design Group has carefully designed Stock Plans to meet zoning requirements for the average residential lot in Surrey, Maple Ridge, Langley and Abbotsford.



604 876 3738

sales@dosdesigngroup.com



604 831 3523

info@dmcontracting.ca

High Performance Stock Plans Can Save You Time and Money

Our Single Family Stock Plan Includes:

- 3270 total sqft + 450 sqft 2 car garage
 - 1060 sqft Main Floor
 - 1162 sqft Upper Floor
 - Optional 1050 sqft Basement (incl. 726 sqft suite)
- Double Height Living Room
- Open Concept Living Area
- 2 Kitchens
- 4.5 Bathrooms
- 4 Large Bedrooms
- An Office, a Den, and a Media Room
- Attached 2 Car Garage
- Rear Covered Deck

Key Features:

- Available in multiple exterior style types
- Ample heated storage
- Heated mechanical room with easy access heat pump and HRV
- High Performance walls, roof and foundation designed to meet new home energy efficiency requirements
- Solar ready and Zero Emission ready
- Improved indoor air quality
- Even indoor temperature distribution
- Low noise level
- Reduced heating and cooling costs!
- Thousands of dollars in **rebates!**



Pricing

Stock Plans with site specific adjustments: **\$10,000** + GST
Revisions to interior layout, roof or exterior of building: **billed hourly**

Estimated Additional Costs

Land Survey: ~ \$2,000
Arborist: ~ \$1,000
Structural Engineer: ~ \$4,000
Certified Energy Advisor (CEA): ~ \$1,800

Keep Your Family Healthy: Choose High Performance Design

High Performance House is not only a great way to protect the environment but also your own health – and the health of your loved ones. Not sure how a house can help your health? There are actually several ways.

1. No Drafts

Drafts can lead to health issues. The worst situation is when you have drafts in rooms you sleep in. When this occurs, respiratory ailments can emerge or get worse. A High Performance House is designed to have few unintended drafts, all airflow is planned so that there is always fresh air, so you can rest easy – and breath easy too, knowing that you are not going to walk through the house and feel a draft!



2. No Mold

Mold – it is one of the biggest risks to your health in your home. When houses are damp, it is easy for mold to grow. With a High Performance House, the house is designed to breathe so that the moisture is constantly being released into the outdoors and to make it difficult for moisture to find its way back in, preventing mold from developing.

3. No Vermin

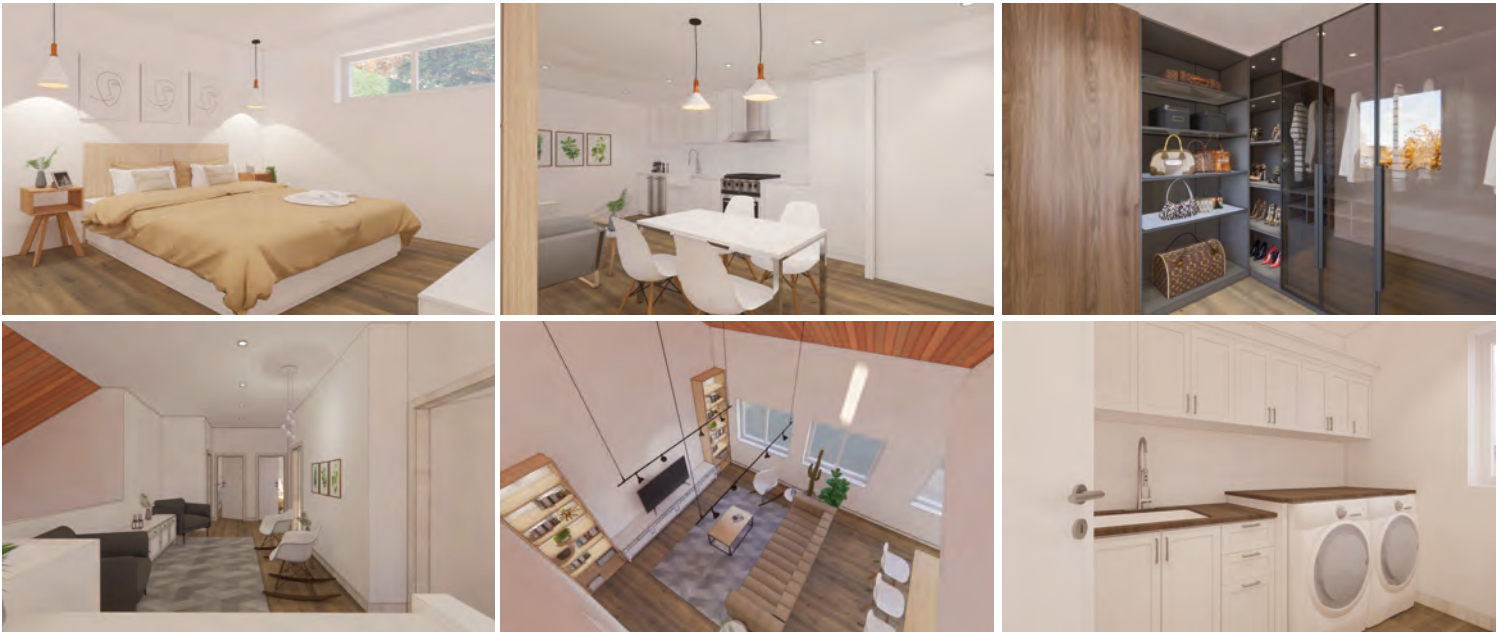
When houses are not properly sealed, it is easy for vermin to get in. High Performance Houses are fully sealed, they ensure that vermin cannot enter. This protects you and your family from vermin – and the diseases that can come with them.

4. Less Physical & Emotional Stress

Every time the temperature changes more than two degrees, the human body experiences stress. When this happens, it can go into a calorie reduction mode, retaining more weight. With a High Performance House, the temperature remains consistent. This means that your body does not experience stress related to temperature change when you are in your home. That can have a significant impact on you and your loved ones' health, especially if someone in your family has a stress-related illness, such as lupus or dementia.

We now know that stress is connected to every health issue, from cancer to heart attacks. A High Performance House allows you to let go of the worry about your home, its impact on your and your loved ones' health as well as letting go of the stress of high energy bills.

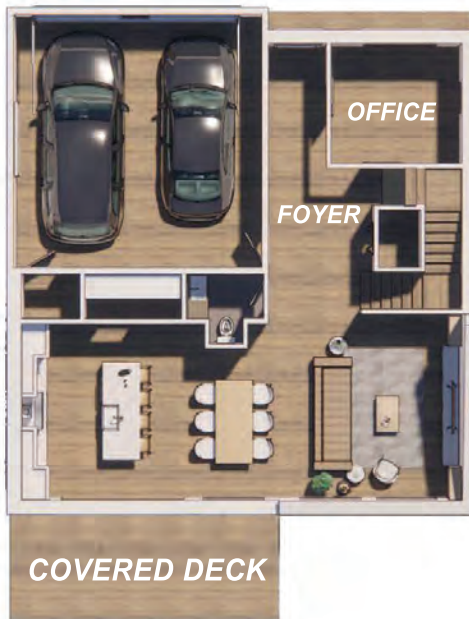
Would you like to learn more about high performance design? Contact us at consulting@dosdesigngroup.com



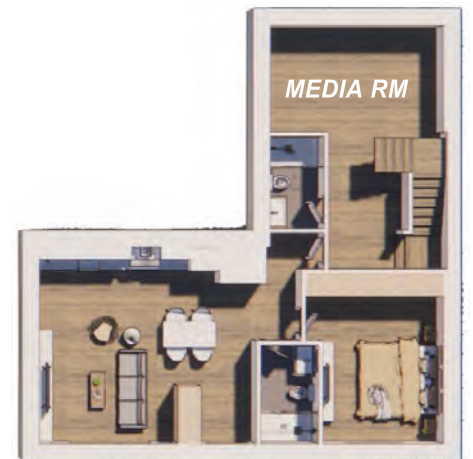
High Performance Design + Build



UPPER FLOOR



MAIN FLOOR



LOWER FLOOR
(optional)

*Contact DOS Design Group for more stock plans optimized for other cities and zones.



604 876 3738
sales@dosdesigngroup.com



604 831 3523
info@dmcontracting.ca